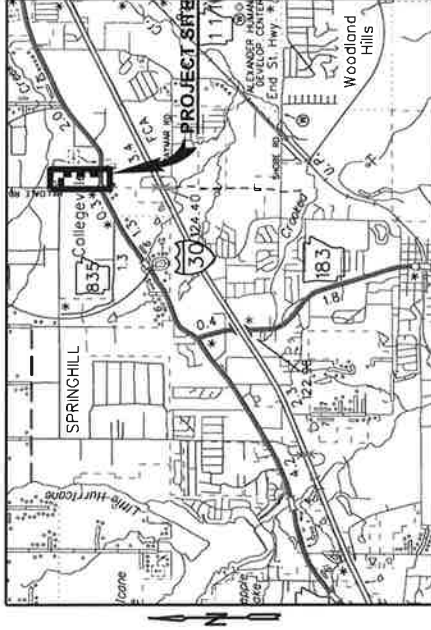


BRYANT PARKWAY HWY. 5 TO HILLDALE RD. CITY OF BRYANT SALINE COUNTY, ARKANSAS



LOCATION MAP



VICINITY MAP
NO SCALE

SHEET INDEX	
SHEET NO.	TITLE
1	COVER SHEET
2	TYPICAL SECTIONS OF IMPROVEMENT
3-4	PLAN AND PROFILE SHOULDER ROAD

GARVER PROJECT NO. 17017110
SEPTEMBER 2017



**30% DESIGN
SUBMITTAL**
NOT FOR CONSTRUCTION



30% PLANS
NOT FOR CONSTRUCTION

REV.	DATE	DESCRIPTION



CITY OF BRYANT
SALINE COUNTY, ARKANSAS
BRYANT PARKWAY
HWY. 5 TO HILLDALE RD.

COVER SHEET

JOB NO.: 17017110
DATE: SEPT. 2017
DESIGNED BY: RCC
DRAWN BY: RCC

CONTRACT NUMBER
G-001

SHEET NUMBER **1**



30% PLANS
NOT FOR CONSTRUCTION

REV	DATE	DESCRIPTION

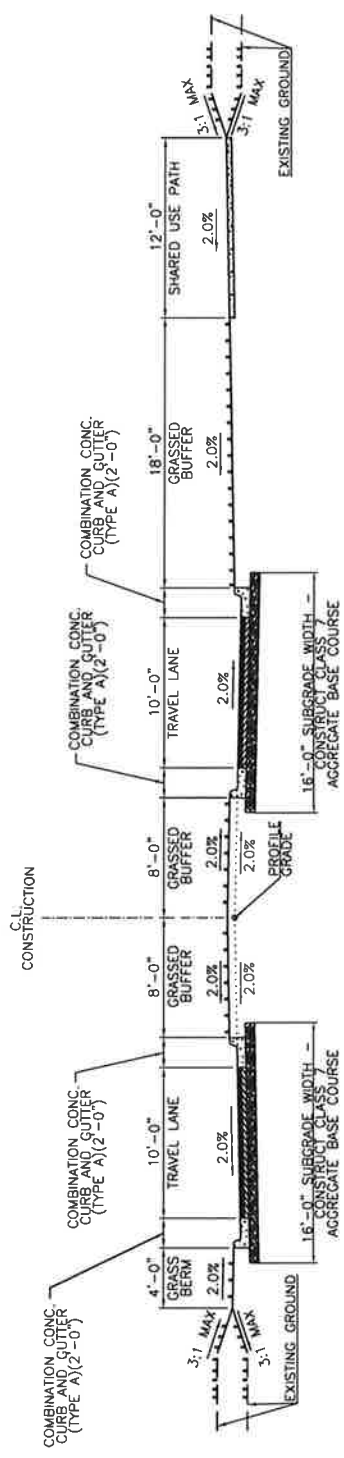
CITY OF BRYANT
SALINE COUNTY, ARKANSAS
BRYANT PARKWAY
HWY. 5 TO HILLDALE RD.

TYPICAL SECTIONS OF
IMPROVEMENT

JOB NO.: 1707110
DATE: SEPT. 2017
DESIGNED BY: RCC
DRAWN BY: RCC

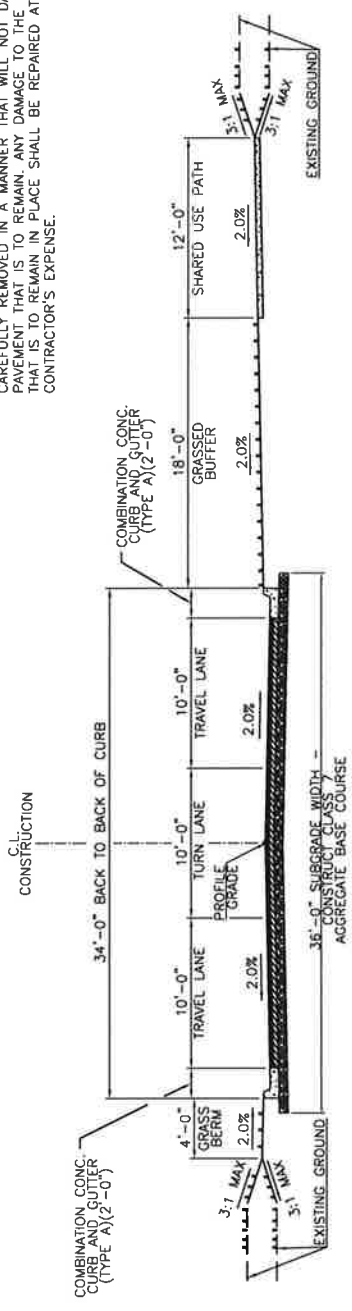
SCALE: 1" = 10'-0"
1" = 10'-0"
1" = 10'-0"

DRAWING NUMBER
C-101
SHEET NUMBER **2**



TYPICAL SECTION ①

STA. 10+70.85 TO STA. 23+98.70



TYPICAL SECTION ②

STA. 23+98.70 TO STA. 33+44.61

TYPICAL SECTION GENERAL NOTES

1. REFER TO CROSS SECTIONS FOR DEVIATIONS FROM NORMAL SLOPES. NO CHANGES SHALL BE MADE FROM THE PLANNED SLOPES WITHOUT THE APPROVAL OF THE ENGINEER.
2. THE THICKNESS OF AGG. BASE COURSE SHALL BE WITHIN PLUS OR MINUS ONE INCH OF THE PLAN THICKNESS SHOWN. THE CONTRACTOR WILL CORRECT ANY DEFICIENT THICKNESS THAT DOES NOT MEET TOLERANCE INDICATED. PAYMENT WILL NOT BE MADE FOR MATERIAL PLACED IN EXCESS OF THE TOLERANCE INDICATED.
3. THE EXISTING PAVEMENT TO BE REMOVED FROM THE REMAINING PAVEMENT SHALL BE SEPARATED BY SAWING ALONG A NEAT LINE. AFTER SAWING, THE PAVEMENT TO BE REMOVED SHALL BE CAREFULLY REMOVED IN A MANNER THAT WILL NOT DAMAGE THE PAVEMENT THAT IS TO REMAIN. ANY DAMAGE TO THE PAVEMENT THAT IS TO REMAIN IN PLACE SHALL BE REPAIRED AT THE CONTRACTOR'S EXPENSE.



30% PLANS
NOT FOR CONSTRUCTION

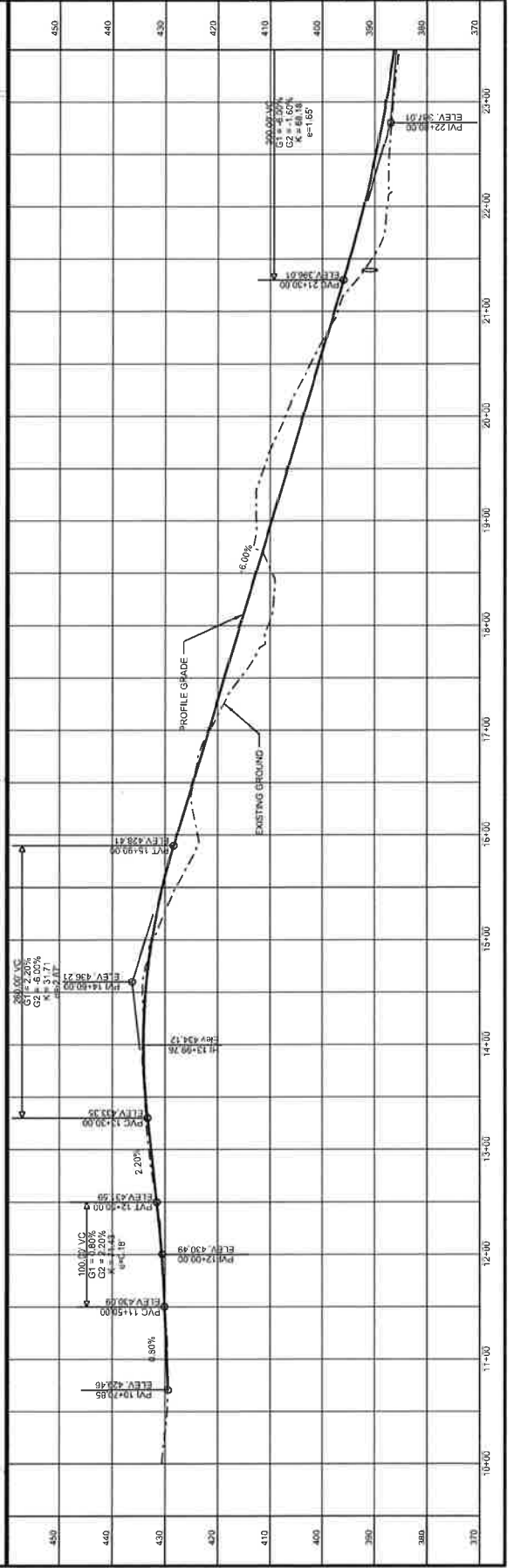
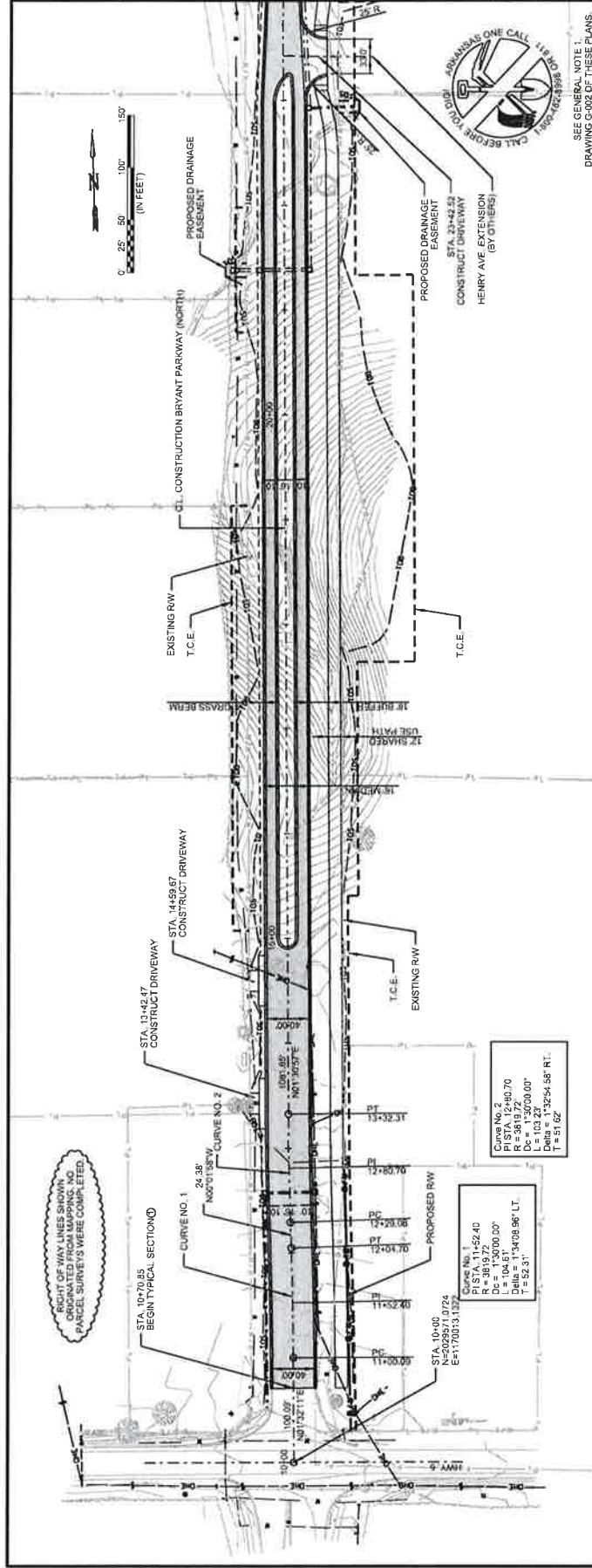
REV	DESCRIPTION	DATE



CITY OF BRYANT
SALINE COUNTY, ARKANSAS
HWY. 5 TO HILDALE RD.
BRYANT PARKWAY
BRYANT PARKWAY
(NORTH)

JOB NO.: 17017110
DATE: SEPT. 2017
DESIGNED BY: RCC
DRAWN BY: RCC

DRAWING NUMBER
C-601
SHEET NUMBER **3**



SEE GENERAL NOTE 1.
DRAWING 9-02 OF THESE PLANS.

RIGHT OF WAY LINES SHOWN ORIGINATED FROM MAPPING. NO PARCEL SURVEYS WERE COMPLETED.



30% PLANS
NOT FOR CONSTRUCTION

REV	DATE	DESCRIPTION

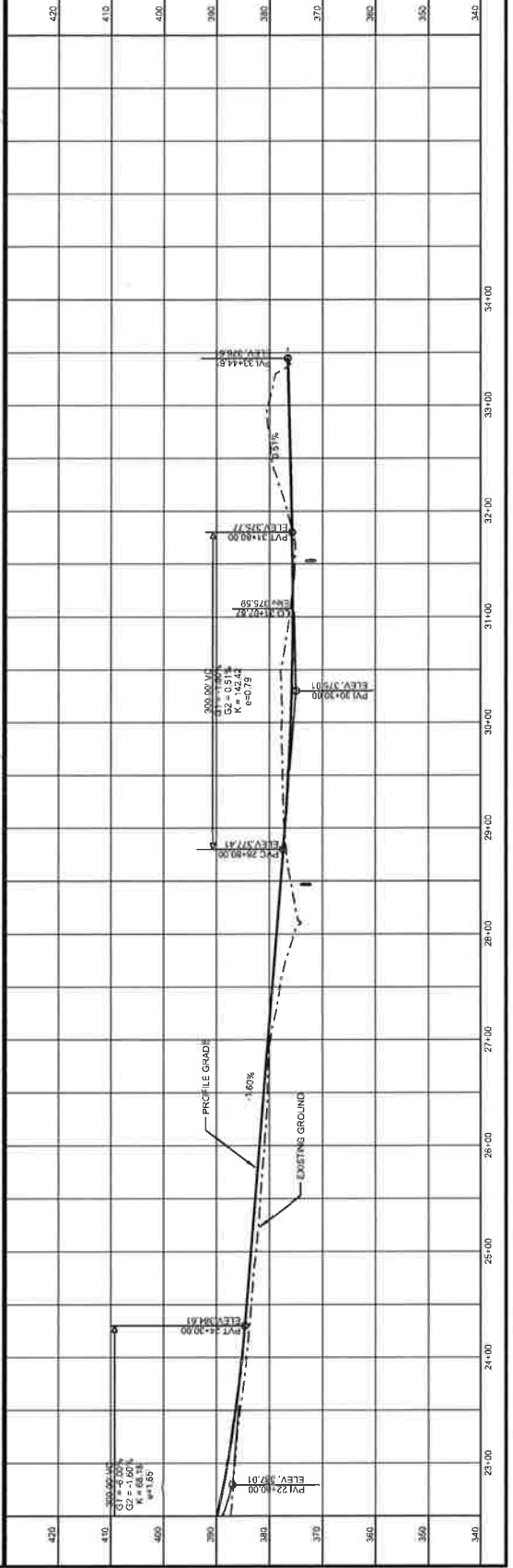
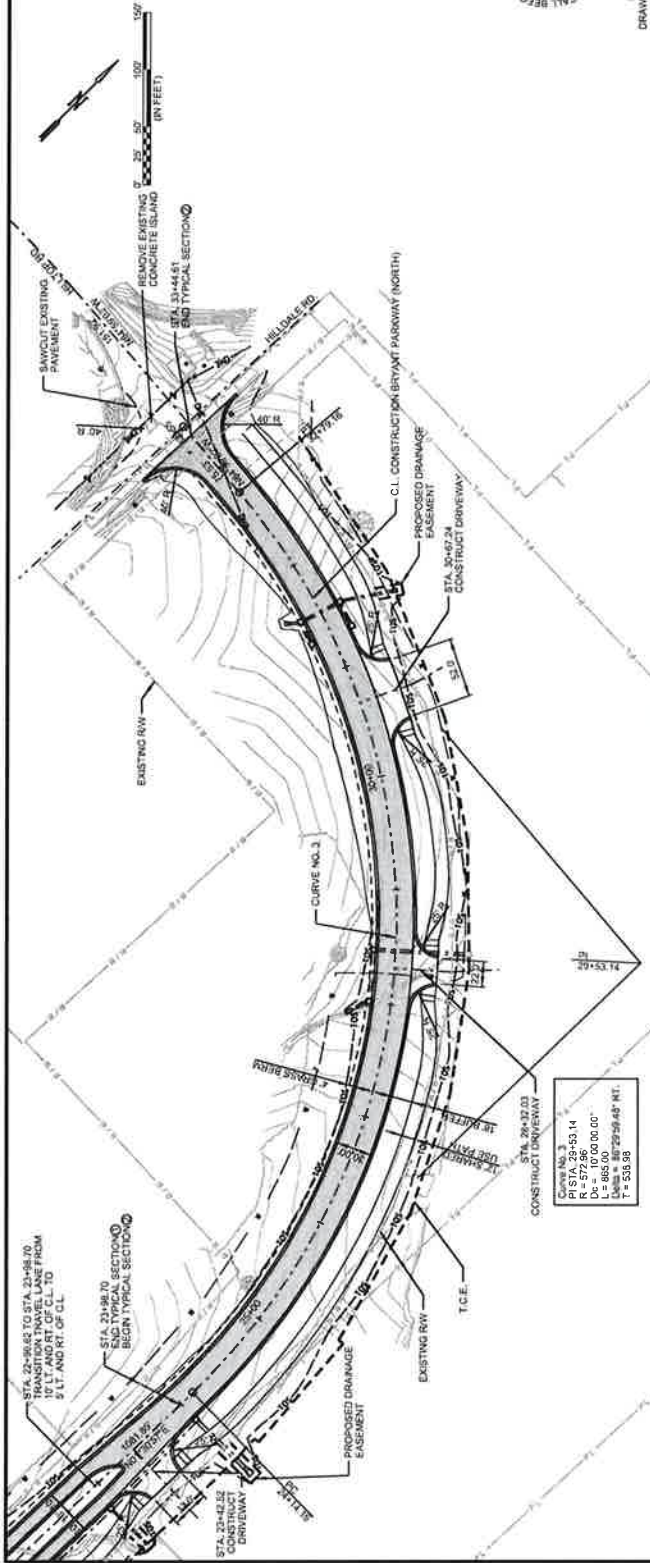


CITY OF BRYANT
SALINE COUNTY, ARKANSAS
BRYANT PARKWAY
HWY. 5 TO HILDALE RD.
(NORTH)

JOB NO. 1703710
DATE: SEPT. 2017
DESIGNED BY: JCC
DRAWN BY: JCC
CHECKED BY: JCC
SCALE: AS SHOWN
DRAWING NUMBER
C-602
SHEET NUMBER **4**



SEE GENERAL NOTE 1.
DRAWING DATED THESE PLANS.



PRELIMINARY SCHEDULE

BRYANT PARKWAY - HWY. 5 TO HILLDALE RD.

APPENDIX D

8/14/2017

Description	Month	2017						2018											
		May	June	July	Aug	Sept	Oct	Nov	Dec	Jan	Feb	March	April	May	June	July	Aug	Sep	
City Funding (Without AHTD Review)																			
Kickoff Meeting																			
Design Surveys																			
Environmental Permitting																			
Geotechnical Analysis																			
30% Design with Cost Estimate																			
City Review and Comment																			
60% Design with Cost Estimate																			
City Review and Comment																			
Final Design and Specifications																			
City Review and Comment																			
Utility Coordination																			
Advertise and Bid																			
Construction																			

◆ NTP & Information Provided

NTP on 5/31/2017
 Completed (7/24/2017)
 In Progress (Started 7/13/2017)
 In Progress (Started 6/27/2017)
 Completed (Pending Submittal)